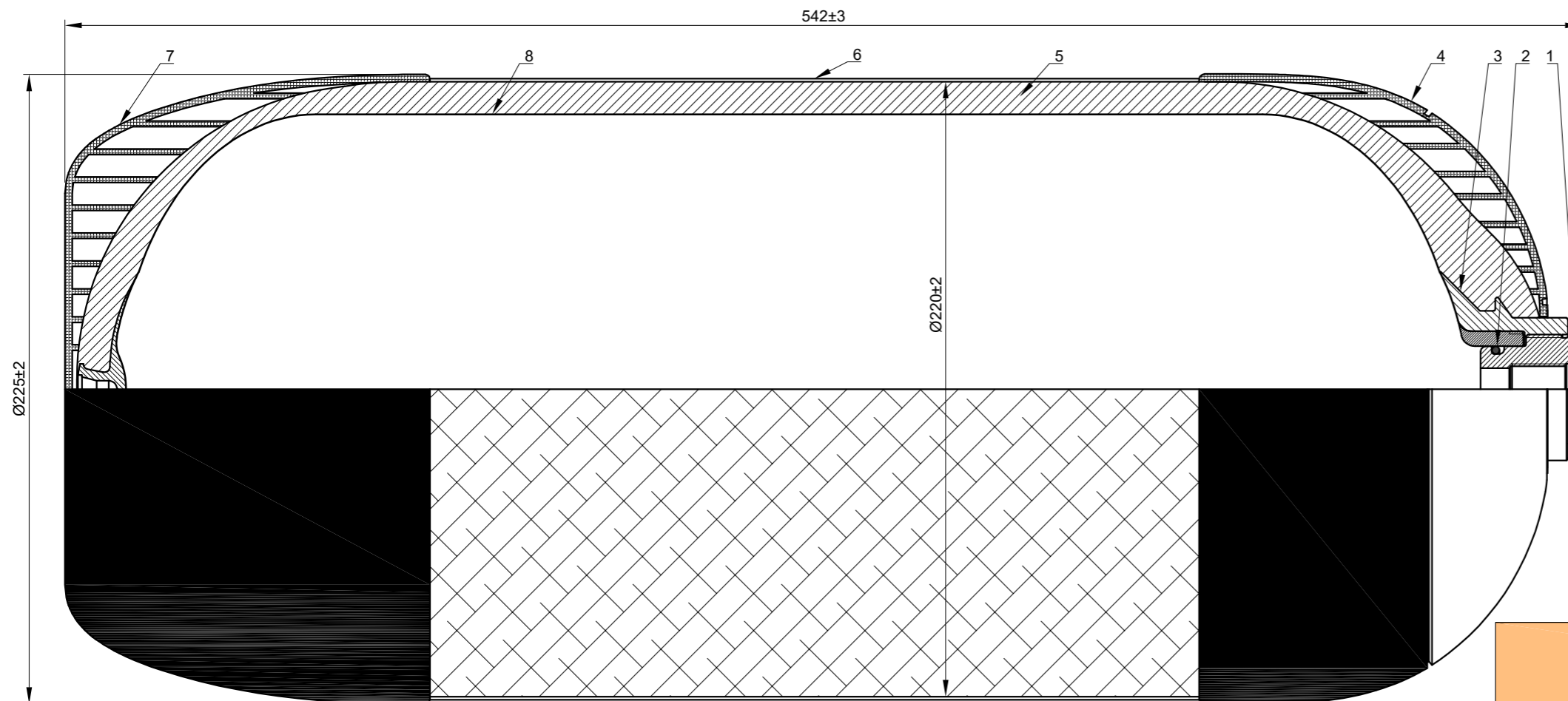


| | | | |
|--|--|---|--|
| Verification Body Logo | | First Inspection (Year/Month) | Customisable Logo Area (Black and White) |
| M18x1,5 I CTS xx/xxx/xxxxxx x,xx KG* 13,0 L PW310 at 15° C PT/PH465BAR PSmax: 393 BAR at 65°C TS: -50°C to 65°C ISO 11119-3 I xxxx/xx CE 1370 PET LINER FINAL: NLL WARNINGS: FILL IN ACCORDANCE WITH MANUFACTURER'S INSTRUCTIONS THIS CYLINDER MUST NOT BE SUBJECTED TO A VACUUM AVVERTENZE: RIEMPIRE SECONDO LE ISTRUZIONI DEL FABBRICANTE QUESTA BOMBOLA NON DEVE ESSERE SOTTOPOSTA A VUOTO *see manual for info about weight / vedi manuale per info sul peso | | UN 1002 Compressed Air Aria respirabile | COMPOSITE TECHNICAL SYSTEMS COMPOSITE TECHNICAL SYSTEMS INSTRUCTIONS: 1) Valve screwing torque: 85 Nm 2) Before use, read carefully the user manual 3) Fill with Breathing Air according to EN 12021 4) Avoid storing without pressure |
| FIRST INSPECTION DATE/DATA PRIMO COLLAUDO | | xx/xxxx | RETESTING / RICOLLAUDO |

| Cylinder layout | Description and notes | Empty cylinder weight |
|---|---|--------------------------------|
| Cylinder without finishings (bare cylinder) | Without finishings | 5.30±0.30 kg 11.68±0.66 lbs |
| Finished cylinder with transparent coating | Finished cylinder with transparent coating and rubber caps. | 6.27±0.30 kg 13.82±0.66 lbs |

Verification Body Number



Legend:

- ① Inner boss (internal nozzle)

| THREADS | |
|----------------------|--------------------------|
| STANDARD THREAD | M18x1.5 - EN ISO 15245-1 |
| OTHER COMMON THREADS | M25x2.0 - EN ISO 15245-1 |
| | 7/8" - 14 UNF - 2B |

- ② O-ring
- ③ Outer boss (external nozzle)
- ④ Upper rubber cap
- ⑤ Composite stratification layer
- ⑥ Optional exterior finishing
- ⑦ Bottom rubber cap
- ⑧ Internal PET liner

CTS SpA Type 4 cylinders Data Sheet:
13.0 lt 310 bar Breathing Air - SCBA

| | | | |
|---|----------------------|--|------------------|
| Working pressure: 310 bar (4496 psi) | | Boss (nozzles) material: Anodized aluminum alloy | |
| Test pressure: 465 bar (6744 psi) | | Liner material: PET | |
| Min. design burst pressure: >930 bar (13489 psi) | | Reinforcement material: Carbon fiber + Epoxy resin | |
| Water capacity: 13.0 L (793.31 cu. inch) | Duration: 90 minutes | Exterior finishing: Customer specifications | |
| Service life: non limited (NLL) acc. to ISO 11119-3 : 2013 | | Approved gases according to Regulations Nr. CE 1272/2008 UN 1002 Compressed Air (Breathing Air) Group 2 | |
| Specifications: ISO 11119-3 : 2013; European Directive PED 2014/68/UE. | | PED Module: B + F | PED Category: IV |

