

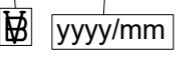



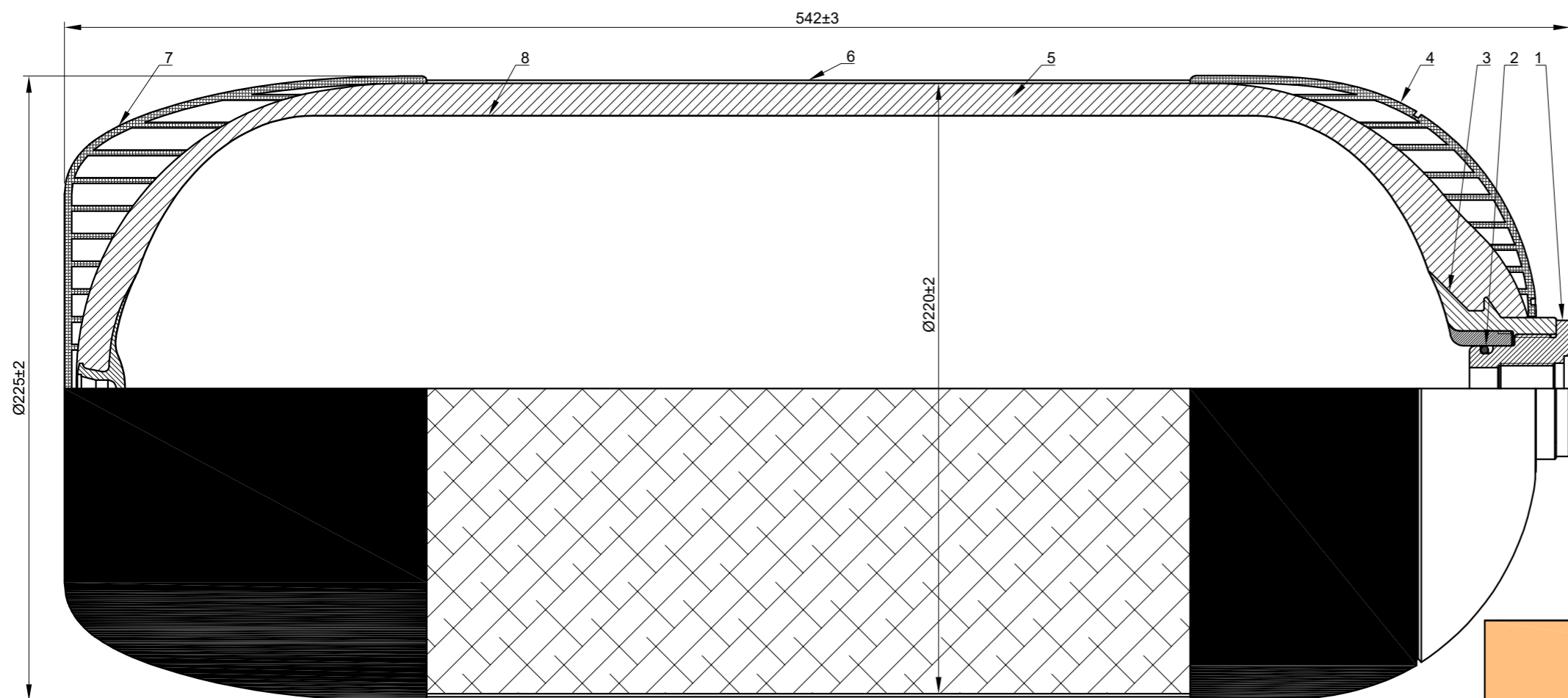
Verification Body Logo First Inspection Year/Month Customizable logo area (Black and White)

| | | |
|-----------------------------------------------------------------------------------------------------------------------------------------------------------------------------------------------------------------------------------------|----------------------------------------------------------------------------------------------------|------------------------------------------------------------------------------------------------------------------------|
| M18x1,5 CTS XX/XXX/XXXXXXX x,xxKG 13,0L PW310 at 15°C PT/PH465BAR PS:393 BAR at 65°C TS:-50°C to 65°C | UN 1002 Compressed Air Aria Respirabile |  COMPOSITE TECHNICAL SYSTEMS |
|  ISO 11119-3 I  yyyy/mm |  Fluid Group 2 | Composite Technical Systems S.p.A Via Monsignor Faldutti, 9 33048 Chiopris Viscone (UD) ITALY www.ctscoil.com |
| WARNINGS FILL IN ACCORDANCE WITH MANUFACTURER'S INSTRUCTIONS THIS CYLINDER MUST NOT BE SUBJECTED TO A VACUUM AVVERTENZE RIEMPIRE SECONDO LE ISTRUZIONI DEL FABBRICANTE QUESTA BOMBOLA NON DEVE ESSERE SOTTOPOSTA A VUOTO | FINAL:>NNL | RETESTING/RICOLLAUDO: |

INSTRUCTIONS:
1) Valve screwing torque: 85 Nm
2) Before use, read carefully the user manual
3) Fill with Breathing Air according to EN 12021
4) Avoid storing without pressure

| Cylinder layout | Description and notes | Empty cylinder weight |
|---------------------------------------------|-------------------------------------------------------------|--------------------------------|
| Cylinder without finishings (bare cylinder) | Without finishings | 5.30±0.30 kg 11.68±0.66 lbs |
| Finished cylinder with glass fiber coating | Finished cylinder with glass fiber coating and rubber caps. | 6.43±0.30 kg 14.18±0.66 lbs |

Verification Body Number



Legend:

- ① Inner boss (internal nozzle)

| THREADS | |
|----------------------|------------------------------------------------|
| STANDARD THREAD | M18x1.5 - EN ISO 15245-1 |
| OTHER COMMON THREADS | M25x2.0 - EN ISO 15245-1 7/8" - 14 UNF - 2B |

- ② O-ring
- ③ Outer boss (external nozzle)
- ④ Upper rubber cap
- ⑤ Composite stratification layer
- ⑥ Optional exterior finishing
- ⑦ Bottom rubber cap
- ⑧ Internal PET liner

CTS SpA Type 4 cylinders Data Sheet:
13.0 lt 310 bar Breathing Air - SCBA

| | |
|---------------------------------------------------------------------------|------------------------------------------------------------------------------------------------------------|
| Working pressure: 310 bar (4496 psi) | Boss (nozzles) material: Anodized aluminum alloy |
| Test pressure: 465 bar (6744 psi) | Liner material: PET |
| Min. design burst pressure: >930 bar (13489 psi) | Reinforcement material: Carbon fiber + Epoxy resin |
| Water capacity: 13.0 L (793.31 cu. inch) Duration: 90 minutes | Exterior finishing: Customer specifications |
| Service life: non limited (NLL) acc. to ISO 11119-3 : 2013 | Approved gases according to Regulations Nr. CE 1272/2008 UN 1002 Compressed Air (Breathing Air) Group 2 |
| Specifications: ISO 11119-3 : 2013; European Directive PED 2014/68/UE. | PED Module: B + F PED Category: IV |

