

• **CTS CYLINDERS INSPECTION AND DAMAGE EVALUATION GUIDE** •
We take care of your safety

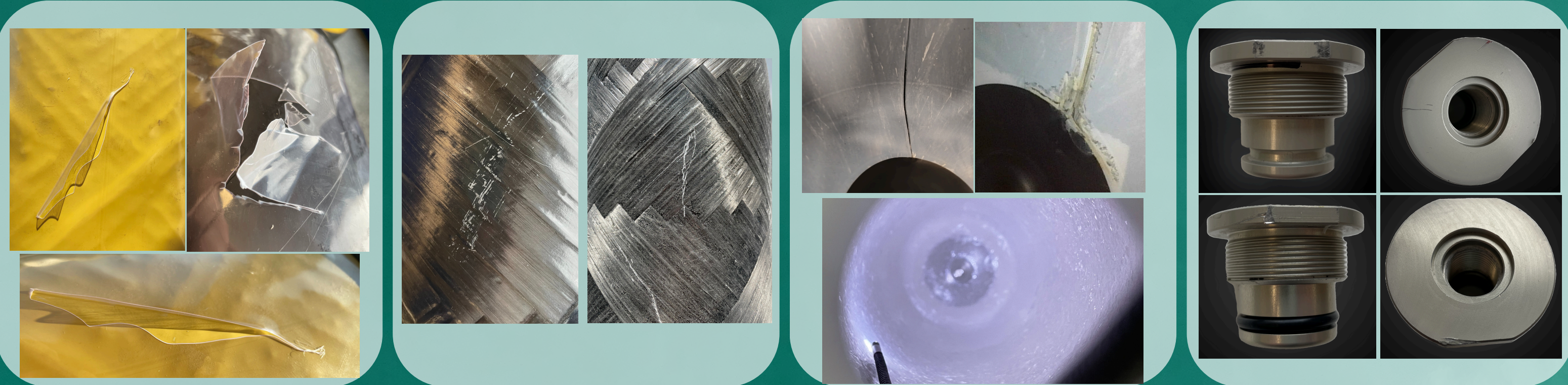
FINISHING VISUAL INSPECTION

COMPOSITE MATERIAL VISUAL INSPECTION

INTERNAL VISUAL INSPECTION

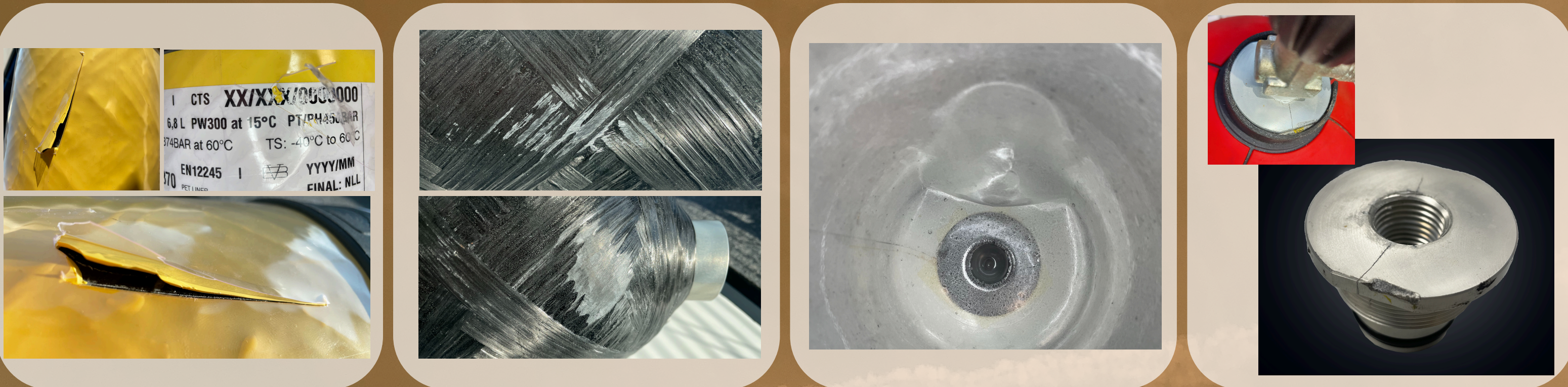
THREAD AND NOZZLE VISUAL INSPECTION

D A M A G E S L E V E L 1



DAMAGES LEVEL 1: This kind of damages on the cylinders are classed as Level 1 damage and are acceptable, hence no repair is required. Such damage has no adverse effects on the safety of the cylinder and its continued use.

D A M A G E S L E V E L 2



DAMAGES LEVEL 2: Level 2 damage can be subjected to rejection after testing. This type of damage is either proved to be acceptable (Level 1) by CTS S.p.A. tests' and investigation results, or else evaluated to be a Level 3 damage.

D A M A G E S L E V E L 3



DAMAGES LEVEL 3: Level 3 damage is sufficiently severe that the cylinder cannot be repaired: it shall be rejected and subsequently made unserviceable.

For more information please refer to our CTS CYLINDERS INSPECTION AND TESTING MANUAL. This manual follows broadly ISO 11623 and does not expect to report every possible case. Any question regarding non-standard cases shall be directed to CTS at info@ctscyl.com - 0432 991383.



www.ctscyl.com

